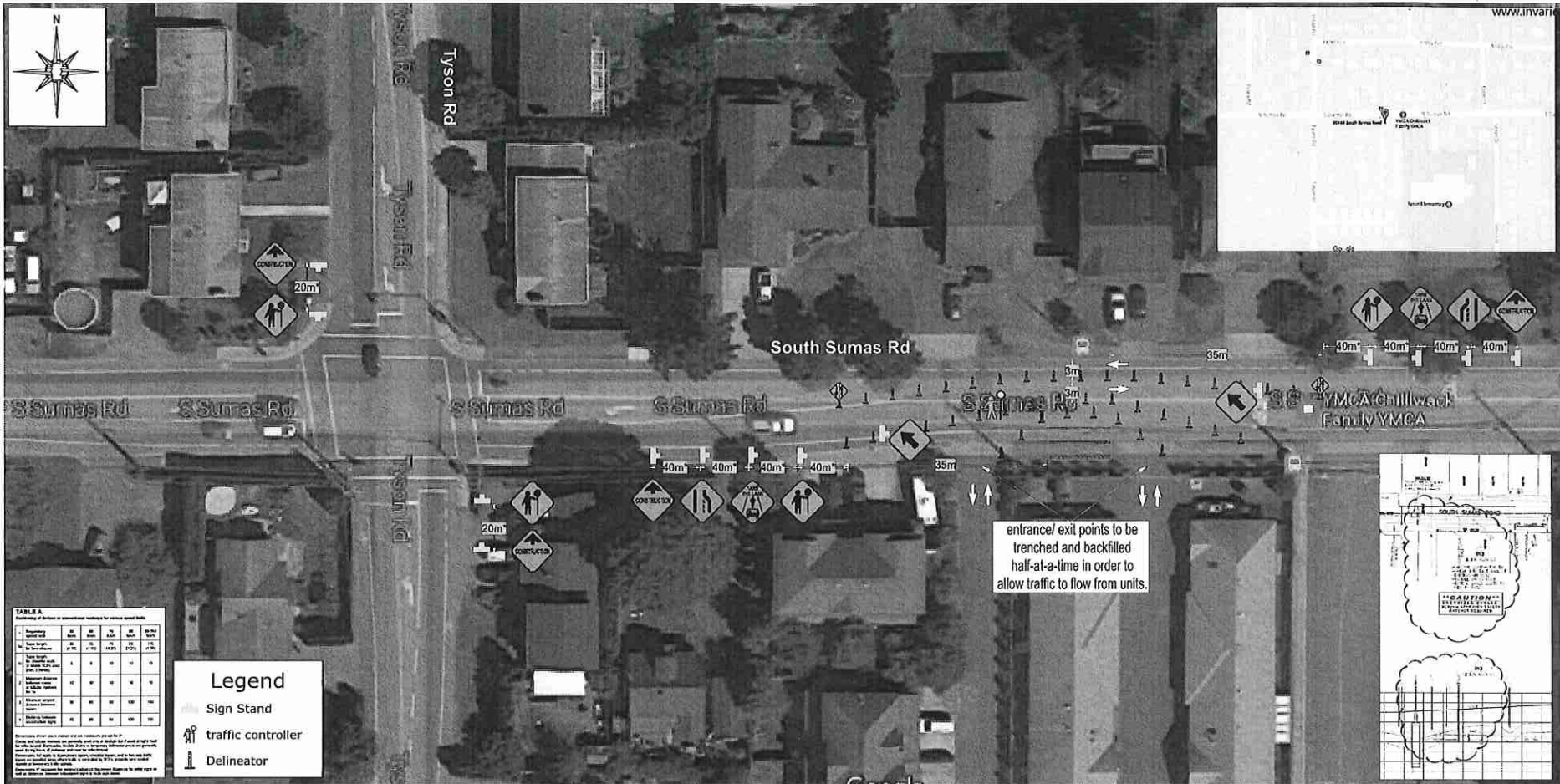


ISSUED FOR
CONSTRUCTION

REVISIONS		BY	CHK	APPR	DATE	SCALE	AS SHOWN
14	DESIGN 4039727 EC	CA	RE		01/28/20	AS SHOWN	DISTRIBUTION ENGINEERING
13	DESIGN 4039727 ADDED	EA	RE		01/27/20		
12	ADDED REFERENCE DRAWING INFO	JW	DR		03/20/20		
11	ADDED SHEET NO. AND REV. NO.	JW	DR		03/20/20		
10	TRON 474-107-D1120	JW	DR		03/20/20		
9	LINKS CONSIDERED REVISIONS	JW	JN	DF	03/18/20		
8	REVISIONS TO SHEETS 3 AND 13	JW	JN	DF	20/03/19		
7	REVISIONS TO SHEETS 3 AND 13	JW	JN	DF	20/03/19		
6	REVISIONS TO SHEETS 3 AND 13	JW	JN	DF	20/03/19		
5	REVISIONS TO SHEETS 3 AND 13	JW	JN	DF	20/03/19		
4	REVISIONS TO SHEETS 3 AND 13	JW	JN	DF	20/03/19		
3	REVISIONS TO SHEETS 3 AND 13	JW	JN	DF	20/03/19		
2	REVISIONS TO SHEETS 3 AND 13	JW	JN	DF	20/03/19		
1	REVISIONS TO SHEETS 3 AND 13	JW	JN	DF	20/03/19		

-PLAN & PROFILE ALONG SOUTH SUMAS ROAD-
PLAN & PROFILE OF UNDERGROUND
DUCTBANK ALONG LICKMAN ROAD
AND SOUTH SUMAS ROAD TO
VEDDER ROAD
CHILLIWACK

SHEET No. 9 of 14
DWG. No. 474-U07-D1120
R14



entrance/ exit points to be
trenched and backfilled
half-at-a-time in order to
allow traffic to flow from units.

TABLE A
Positioning of devices or conventional markings for various speed limits

Device/Marking	30	40	50	60	70	80	90
1. Advance warning sign	100m	100m	100m	100m	100m	100m	100m
2. Advance warning sign	100m	100m	100m	100m	100m	100m	100m
3. Advance warning sign	100m	100m	100m	100m	100m	100m	100m
4. Advance warning sign	100m	100m	100m	100m	100m	100m	100m
5. Advance warning sign	100m	100m	100m	100m	100m	100m	100m
6. Advance warning sign	100m	100m	100m	100m	100m	100m	100m
7. Advance warning sign	100m	100m	100m	100m	100m	100m	100m
8. Advance warning sign	100m	100m	100m	100m	100m	100m	100m
9. Advance warning sign	100m	100m	100m	100m	100m	100m	100m
10. Advance warning sign	100m	100m	100m	100m	100m	100m	100m
11. Advance warning sign	100m	100m	100m	100m	100m	100m	100m
12. Advance warning sign	100m	100m	100m	100m	100m	100m	100m
13. Advance warning sign	100m	100m	100m	100m	100m	100m	100m
14. Advance warning sign	100m	100m	100m	100m	100m	100m	100m
15. Advance warning sign	100m	100m	100m	100m	100m	100m	100m
16. Advance warning sign	100m	100m	100m	100m	100m	100m	100m
17. Advance warning sign	100m	100m	100m	100m	100m	100m	100m
18. Advance warning sign	100m	100m	100m	100m	100m	100m	100m
19. Advance warning sign	100m	100m	100m	100m	100m	100m	100m
20. Advance warning sign	100m	100m	100m	100m	100m	100m	100m
21. Advance warning sign	100m	100m	100m	100m	100m	100m	100m
22. Advance warning sign	100m	100m	100m	100m	100m	100m	100m
23. Advance warning sign	100m	100m	100m	100m	100m	100m	100m
24. Advance warning sign	100m	100m	100m	100m	100m	100m	100m
25. Advance warning sign	100m	100m	100m	100m	100m	100m	100m
26. Advance warning sign	100m	100m	100m	100m	100m	100m	100m
27. Advance warning sign	100m	100m	100m	100m	100m	100m	100m
28. Advance warning sign	100m	100m	100m	100m	100m	100m	100m
29. Advance warning sign	100m	100m	100m	100m	100m	100m	100m
30. Advance warning sign	100m	100m	100m	100m	100m	100m	100m
31. Advance warning sign	100m	100m	100m	100m	100m	100m	100m
32. Advance warning sign	100m	100m	100m	100m	100m	100m	100m
33. Advance warning sign	100m	100m	100m	100m	100m	100m	100m
34. Advance warning sign	100m	100m	100m	100m	100m	100m	100m
35. Advance warning sign	100m	100m	100m	100m	100m	100m	100m
36. Advance warning sign	100m	100m	100m	100m	100m	100m	100m
37. Advance warning sign	100m	100m	100m	100m	100m	100m	100m
38. Advance warning sign	100m	100m	100m	100m	100m	100m	100m
39. Advance warning sign	100m	100m	100m	100m	100m	100m	100m
40. Advance warning sign	100m	100m	100m	100m	100m	100m	100m
41. Advance warning sign	100m	100m	100m	100m	100m	100m	100m
42. Advance warning sign	100m	100m	100m	100m	100m	100m	100m
43. Advance warning sign	100m	100m	100m	100m	100m	100m	100m
44. Advance warning sign	100m	100m	100m	100m	100m	100m	100m
45. Advance warning sign	100m	100m	100m	100m	100m	100m	100m
46. Advance warning sign	100m	100m	100m	100m	100m	100m	100m
47. Advance warning sign	100m	100m	100m	100m	100m	100m	100m
48. Advance warning sign	100m	100m	100m	100m	100m	100m	100m
49. Advance warning sign	100m	100m	100m	100m	100m	100m	100m
50. Advance warning sign	100m	100m	100m	100m	100m	100m	100m

- Legend**
- Sign Stand
 - traffic controller
 - Delineator

Time Frame: June 19, 2017 - June 30, 2017

Times: Weekdays: 7:00am - 6:00pm
 Saturday: 7:00am - 6:00pm
 (IF REQUIRED)
 Sunday: NO WORK

- Work zone to encompass approx 50m long stretch of South Sumas Road, east bound lane, from existing BCH manhole to new pole termination point
- Divert east bound traffic on South Sumas Road into west bound lane, with west bound pushed to curb/ bike lane.
- Access to Cottage Lane and Woodstone Place units permitted with cones moved and TCP assistance if required. Trench to be backfill or road plates used to allow access to and from units.
- Holes to be backfilled or sufficiently covered and flagged off and made safe over night.
- Pedestrians to use existing sidewalks & crosswalks around work zone
- Signage placed to MOTI and BC traffic manual standards
- CMBC to be notified 48 hrs prior to works

PHASE 2

CLIENT: BC Hydro
DATE: June 8, 2017
PROJECT: 45160 South Sumas Road
 Chilliwack
 DWG# 474-U07-D1120 Rev. 14
 WO# 1632096-02
TMP BY: Kevin Sousa, Ponte Bros
PAGES: 1 page (PHASE 2)

PBC
PONTE BROS
CONTRACTING
 (604) 420-3307

THIS TRAFFIC PLAN HAS BEEN PREPARED BY PONTE BROS CONTRACTING LTD. BASED, IN PART, ON INFORMATION PROVIDED BY THIRD PARTIES. EVERY EFFORT HAS BEEN MADE TO ENSURE THAT THE PLAN CONFORMS TO THE REQUIREMENTS OF THE MOTOR VEHICLE ACT (RSC 1966) CHAPTER 318 AND REGULATIONS AND TO THE BC TRAFFIC CONTROL MANUAL. IMPLEMENTATION OF THIS PLAN WILL BE UNDER THE SUPERVISION OF PONTE BROS CONTRACTING LTD. WHO TAKES NO RESPONSIBILITY FOR THE USES TO WHICH THIS PLAN IS PUT BY THIRD PARTIES NOT DIRECTLY UNDER THE SUPERVISION OF PONTE BROS CONTRACTING LTD.